

FED. AID DIST. NO.	STATE	FED. AID PROJECT NO.	FISCAL YEAR	SHEET NO.	TOTAL SHEETS
6	ARK.	477B(2)		1	5
STATE JOB NO. 11218				1	

STATE OF ARKANSAS  
STATE HIGHWAY COMMISSION

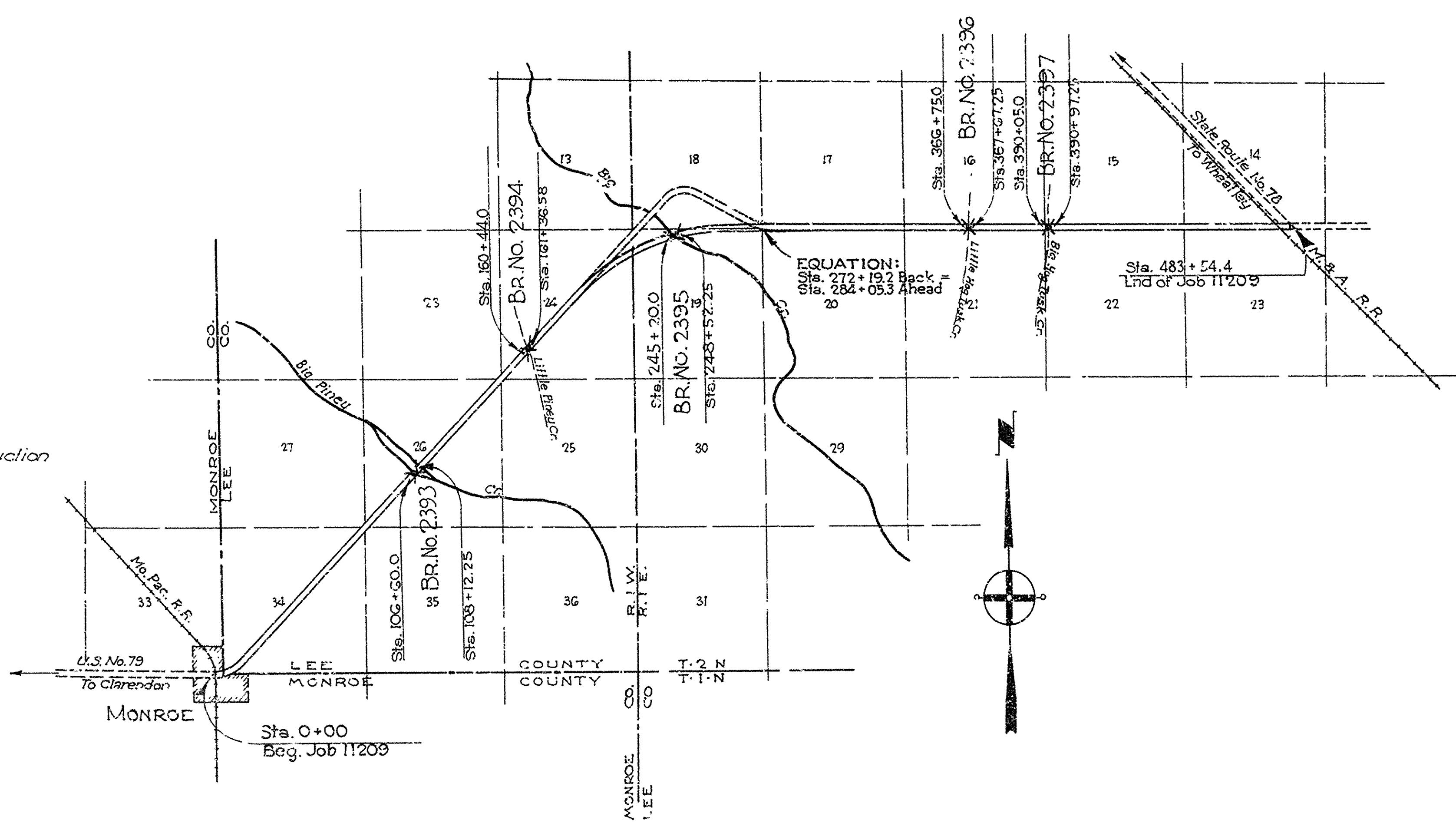
QUANTITIES

INDEX OF SHEETS

Sheet No.	Draw. No.	Title
1	G585	Title Sheet Job No. 11218.
2	G586	Summary Sheet Job No. 11218.
3	G587	Layout Bridge No. 2393.
4	G588	Layout Bridge No. 2394.
5	G589	Layout Bridge No. 2395.
6	G590	Layout Bridge No. 2396.
7	G591	Layout Bridge No. 2397.
8	G592	Details of 30' I-Beam Span.
9	G593	Details of Benits for 30' Span.
10	G594	Special Details 30' I-Beam Span on 0°42' Curve.
11	G595	Details of 30' I-Beam Spans 30° Skew.
12	G596	Details of Benits 30' Spans 30° Skew.
13	1888	Backfill for Structures.
14	1891	Basis for Computing Excavation for Structures.
15	2387	Details of Bridge Name Plates.

PLAN OF PROPOSED BRIDGES  
MONROE - JUNCTION ARK. HWY. No. 78  
LEE COUNTY

ROUTE 79 SEC. 15  
JOB No 11218  
PW FEDERAL AID PROJECT No 477-B (2)



SPECIFICATIONS: Arkansas State Highway Commission  
Standard Specifications for Road and Bridge Construction  
adopted March 1st 1930.

- PAMPHLETS  
DIV. I  
DIV. II Parts 1, 8a, 8b, 9  
DIV. III  
DIV. IV

SPECIAL PROVISIONS

- No.  
550-1 Engineer's Field Office  
553-1 Machine Mixing

No. of Steels  
1

LAYOUT  
Scale: 1 inch = 3000 Ft.

LENGTH OF PROJECT= 761.58 FT. OR 0.144 MI.  
LENGTH OF BRIDGES= 761.58 FT. OR 0.144 MI.  
LENGTH OF EMBANKMENT= 0  
LENGTH OF JOB= 761.58 FT. OR 0.144 MI.

Not to be used  
in Job 11218

RECOMMENDED FOR APPROVAL

DISTRICT ENGINEER  
PUBLIC ROADS ADMINISTRATION  
FEDERAL WORKS AGENCY

APPROVED

COMMISSIONER  
PUBLIC ROADS ADMINISTRATION  
FEDERAL WORKS AGENCY

APPROVED

CHAIRMAN STATE HIGHWAY COMMISSION

APPROVED

STATE HIGHWAY ENGINEER

M.B. Swover  
PRINCIPAL HIGHWAY ENGINEER (BRIDGE)